

# RIVERTOWN

NEIGHBORHOOD COMMUNITY MEETING  
5.26.21

RIVERTOWN

# RIVERTOWN DRI

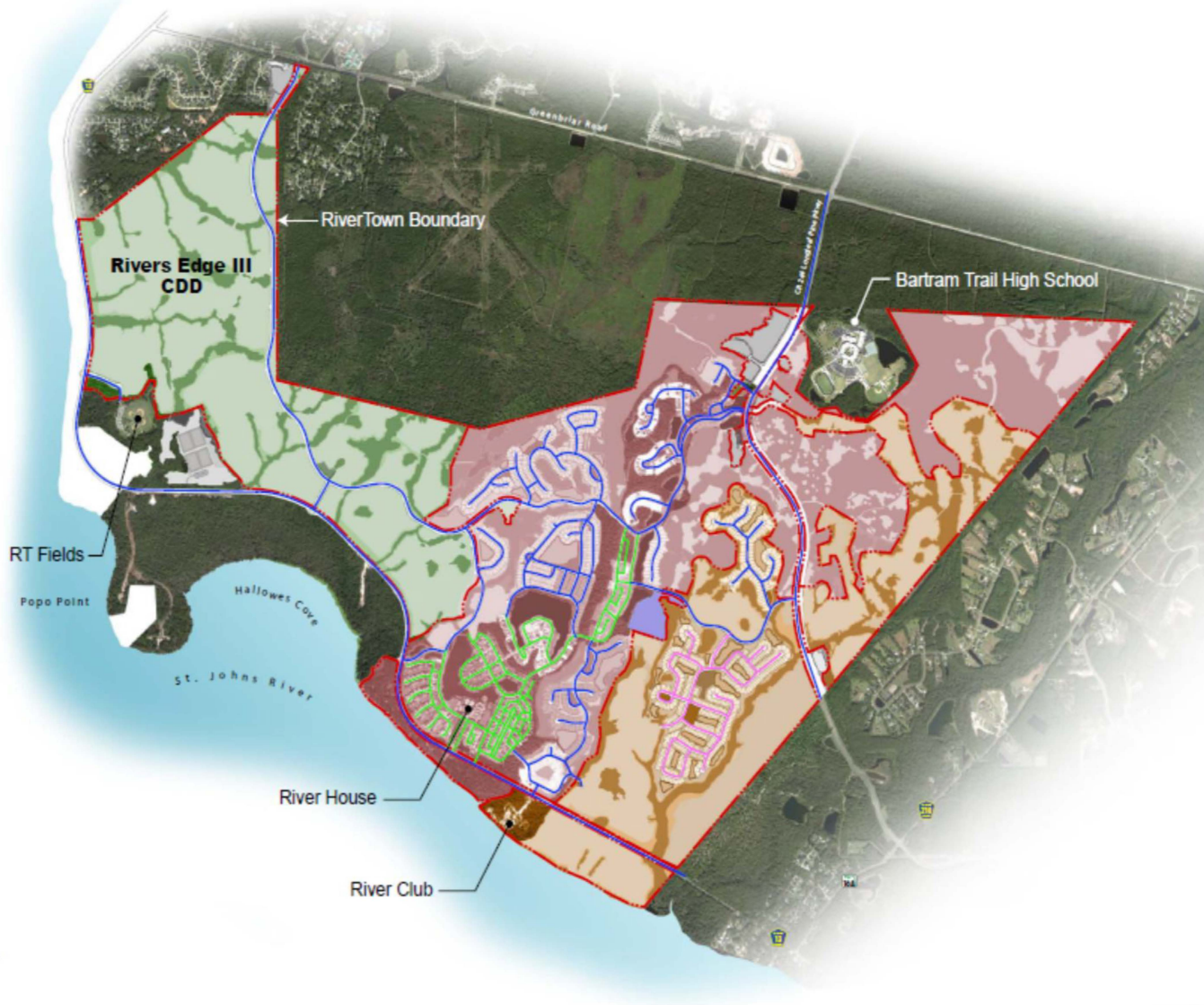
- RiverTown DRI was originally approved by the St. Johns County Commission in 2004. The project includes approximately 4,170 acres and, as modified, includes the following uses:
  - 4,500 dwelling units, including 3,700 single-family and 800 multi-family residences;
  - 300,000 square feet of commercial space;
  - 100,000 square feet of office space;
  - 100,000 square feet of light industrial uses;
  - 18 golf course holes;
  - 1,369 acres of recreation/open space;
  - Churches;
  - Civic uses;
  - Two (2) elementary schools and a middle school.

# RIVERTOWN

## Master Development Plan

### LEGEND

- CDD Boundary
- SJC Road
- Watersong HOA Road
- CDD Road
- Rivers Edge CDD
- Rivers Edge II CDD
- Rivers Edge III CDD
- School Site

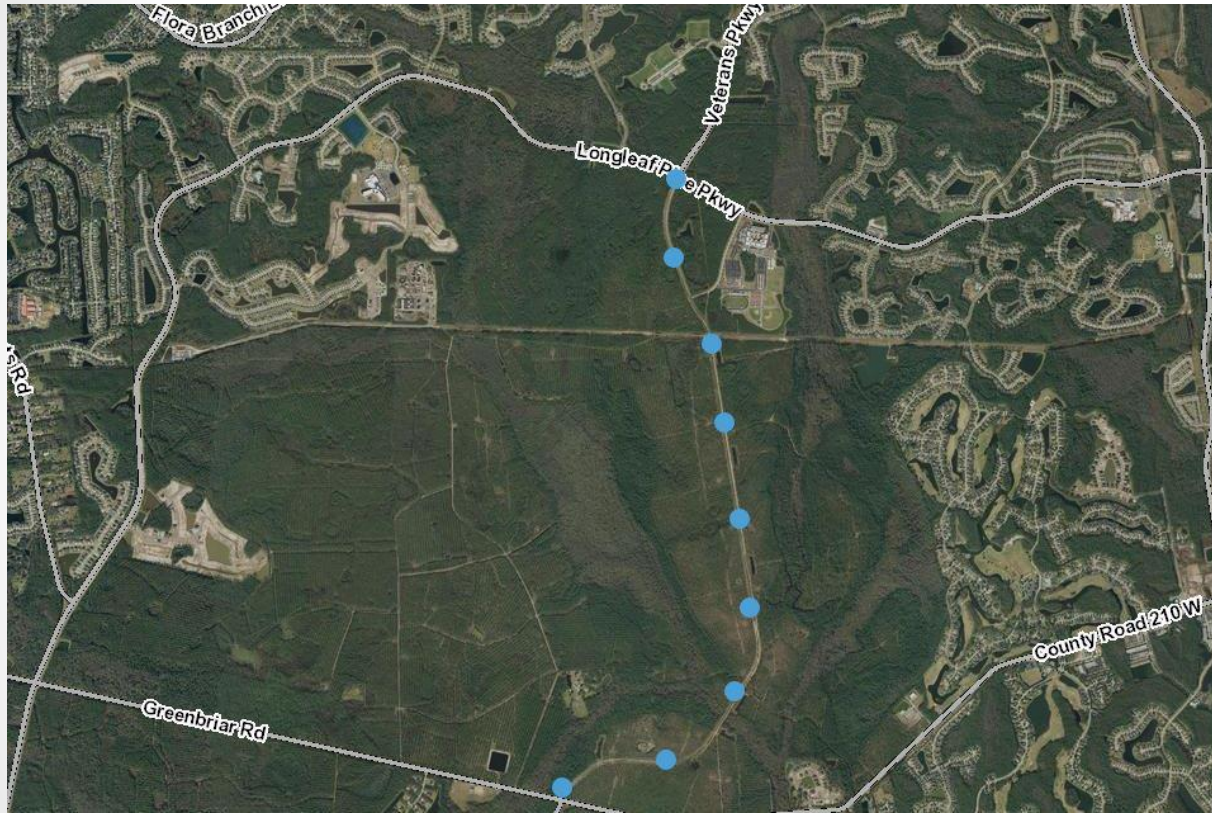


**PROSSER**

0 100 200 300 May 9, 2020 1:00:00 PM

# DRI MOD 2021-01

- The DRI Modification application proposes changes related to previously approved requirements. The Applicant seeks to:
  1. Revise the dates related to the provision of affordable housing.
  2. Revise the dates for construction of the four-lane segment of County Road 223 (Veterans Parkway) between Longleaf Pine Parkway and County Road 210.
  3. Modify certain biennial monitoring report requirements.
  4. Memorialize certain statutory date extensions.



# VETERANS PARKWAY SEGMENT

# RIVERTOWN

NEIGHBORHOOD COMMUNITY MEETING

5.26.21



